

CINCH

WHAT CINCH DOES

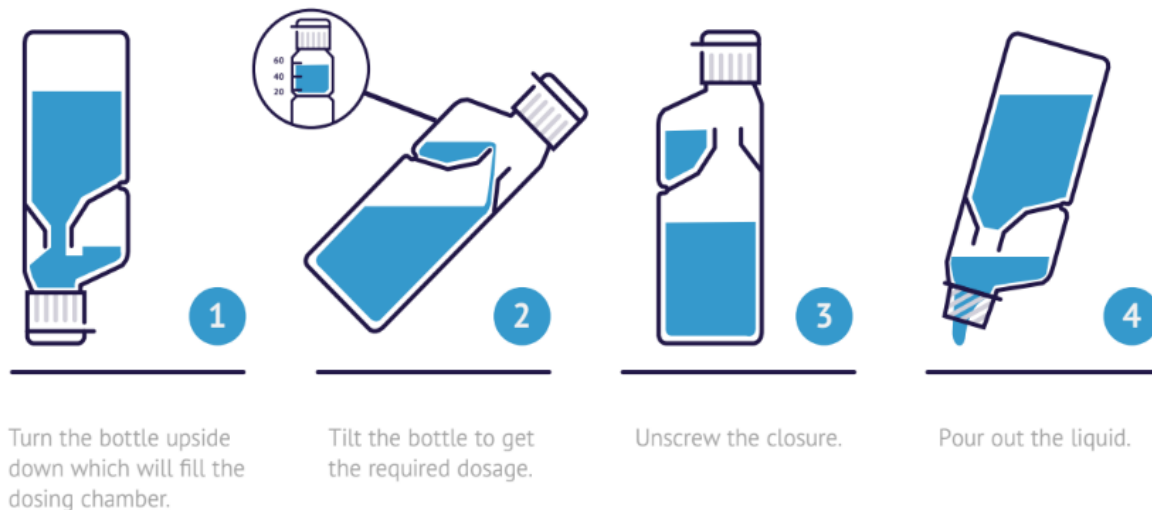
CINCH IS A CONCENTRATED PINE BASED DETERGENT WITH EXCELLENT CLEANING PROPERTIES THAT CLEANS AND DEODORISES IN ONE OPERATION. CINCH CONTAINS NO HARSH ALKALI OR ABRASIVE AND WILL NOT SCRATCH OR STAIN. CINCH LEAVES A FRESH PINE AROMA AFTER USE.

CINCH WILL CLEAN MOST HARD SURFACES INCLUDING WORK TOPS, WALLS, FLOORS AND PAINTWORK. IT IS PARTICULARLY SUITABLE FOR USE IN SCHOOLS, HOSPITALS, MEETING PLACES, PUBLIC HALLS, PUBLIC SERVICE VEHICLES, CARAVANS AND AMBULANCES.

CINCH IS PACKED IN 1 LITRE BOTTLES WHICH ARE EASY TO HANDLE AND FITTED WITH A PRECISION DOSING SYSTEM THAT ALLOWS THE USER TO DISPENSE 20ML, 40ML OR 60ML DOSES OF PRODUCT TO CONTROL USAGE WITHOUT THE NEED FOR EXPENSIVE DOSING EQUIPMENT.

INSTRUCTIONS FOR USE

ENSURE THE CAP IS TIGHTLY CLOSED AND FOLLOW THESE INSTRUCTIONS:



NOTE WHEN ADJUSTING THE DOSE BY TIPPING THE BOTTLE IN STEP 2 IT IS THE GUIDE LINE ON THE LEFT THAT YOU USE SO THAT WHEN UPRIGHT YOU HAVE THE CORRECT DOSE WHICH CAN THEN BE CHECKED AGAINST THE LEVEL LINE ON THE RIGHT SIDE. IN THE CASE OF THE 20ML DOSE THE LEFT SIDE GUIDE LINE IS RIGHT AT THE BOTTOM OF THE CHAMBER.

A VIDEO SHOWING THE PROCESS CAN BE VIEWED ONLINE [HTTPS://VIMEO.COM/74440526](https://vimeo.com/74440526)



CINCH THE IDEAL HAND SPRAY REFILL

ONE 20ML DOSE WILL CHARGE A 500ML HAND SPRAY

1. REMOVE TRIGGER HEAD FROM BOTTLE
2. FILL BOTTLE WITH WARM WATER
3. POUR A 20ML DOSE OF CINCH IN TO THE BOTTLE
4. REFIT TRIGGER HEAD TO THE BOTTLE
5. SHAKE GENTLE TO ENSURE CONTENTS IS MIXED THOROUGHLY

THE CINCH SOLUTION IS AN EXCELLENT HARD SURFACE CLEANER AND PREPARED AS ADVISED ABOVE, IN A 500ML HAND SPRAY, ALLOWS IT TO BE USED FOR A WIDE RANGE OF SPRAY AND WIPE APPLICATIONS. BY USING CINCH AS A HAND SPRAY REFILL, INSTEAD OF PURCHASING A NEW PREFILLED UNIT, YOUR COSTS ARE PENCE NOT POUNDS.

FLOOR CLEANING – SPRAY AND BUFF

SPRAY THE DILUTED CINCH LIGHTLY, IN A FINE MIST, ONTO THE FLOOR SURFACE TREATING AN AREA OF A FEW SQUARE METRES. CLEAN AND BUFF SIMULTANEOUSLY USING A HIGH-SPEED DISC MACHINE FITTED WITH A BUFF OR GREEN PAD.

FLOOR CLEANING - MOPPING

ADD ONE 20ML DOSE TO UP TO 10 LITRES OR 40ML FOR 20 LITRES OF WARM WATER. MOP FLOOR WITH A SIDE-TO-SIDE MOTION, LEAVE A FEW MINUTES AND RINSE WITH CLEAN WATER. FLOOR SCRUBBING MACHINES REQUIRE THE SAME QUANTITY OF CINCH PER LITRE BUT RINSING SHOULD NOT BE REQUIRED UNLESS THE SOIL IS VERY HEAVY. AFTER CLEANING, THE FLOOR CAN BE DRY BUFFED TO DEVELOP A SHINE.

TOILETS

CINCH IS AN IDEAL WASH ROOM CLEANER WITH ITS PLEASANT PINE AROMA. SPRAY AND WIPE TECHNIQUES ARE SUITABLE FOR THE CLEANING OF ALL GLAZED WALLS AND FITTINGS. FLOORS ARE BEST CLEANED BY MOPPING.

WALL CLEANING

AGAIN, SPRAY AND WIPE USING TECHNIQUES ARE VERY EFFECTIVE. ALTERNATIVELY, ADD A 20ML DOSE OR IF HEAVILY SOILED A 40ML DOSE TO 10 LITRES OF WARM WATER AND CLEAN USING A GENTLE CIRCULAR MOTION VIA A CLOTH OR SPONGE. START AT THE TOP AND WORK DOWN. WIPE OFF WITH A CLOTH SPONGE USING CLEAN WATER.

SCUFF MARKS

USING THE HAND SPRAY, APPLY THE CINCH SOLUTION LIBERALLY TO THE SCUFF MARK. LEAVE FOR FIVE MINUTES AND REMOVE WITH A DAMP CLOTH OR MOP. APPLY EXTRA PRESSURE TO ANY STUBBORN MARKS.

VEHICLES

THE INTERIOR HARDSURFACES OF PUBLIC SERVICE VEHICLES, MOTOR HOMES, CARAVANS AND AMBULANCES SUCH AS WALLS, TABLES AND FLOORS CAN ALL BENEFIT FROM CLEANING WITH CINCH VIA THE METHODS DESCRIBED ABOVE. THE POWER OF CINCH COMBINED WITH IT HAVING A NEAR NEUTRAL PH MAKE IT IDEAL FOR THE EXTERIOR SURFACES OF THESE VEHICLES WHICH OFTEN USE ALUMINIUM TRIM AND FITTINGS THAT CAN BE DAMAGED BY TRADITIONAL STRONG ALKALINE VEHICLE CLEANERS. ADD 20ML TO 10 LITRES OF WATER (40ML TO 10 LITRES OF



WATER FOR HEAVY SOILING) AND APPLY VIA A SOFT BRUSH OR SPONGE THEN RINSE THOROUGHLY. HEAVILY SOILED AREAS WILL BENEFIT FROM GENTLE BRUSHING TO AID CLEANING PRIOR TO RINSING.

THE INFORMATION CONTAINED IN THIS DATA SHEET IS ACCURATE TO THE BEST OF OUR KNOWLEDGE AND BELIEF. NO WARRANTY IS, HOWEVER, GIVEN OR IMPLIED. CONSULT AGMA LTD CONCERNING ALL NON-STANDARD APPLICATIONS.

ISSUE NO. 3-7/22